

ABOUT CLOTHING, COLOR, TONE AND STYLE

When more than one person is to appear in the portrait, or when a special stylistic effect is desired, clothing and prop choices can make or break a portrait.

SKIN TONE CONSIDERATIONS

Whether working with light or dark complexions the objective always is for the face to dominate the portrait. Accordingly, skin highlights must be the lightest, brightest, or most intense areas of the portrait. So when a medium to dark background is used, all subjects photograph best in medium to dark tones, whatever the skin tone.

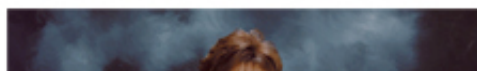


CLOTHING FOR SMALL GROUPS

Couples or small groups should choose simple garments within the same tonal ranges. When subjects appear in a mixture of light and dark tones together, there is a visual confusion - as the light color comes forward, and the dark color recedes. When this happens, (see example of couple below), one person becomes dominant and appears heavier than in reality.



CLOTHING FOR FAMILIES



In a family group, proper clothing coordination is critical. When decorating a home, a major concern is to coordinate the colors and tones of the walls, carpets, drapes, and furniture. Similar coordination is necessary when selecting clothing for a group portrait. Choose clothing in the same tonal ranges so that no single member of the family stands out because the clothing is too light or bright as compared to the rest of the group.

Proper clothing selection makes the difference between a portrait that appears to be a group of seemingly unrelated individuals and one in which every member of the family "belongs" to the group.



◀ BACK NEXT ▶

HOME